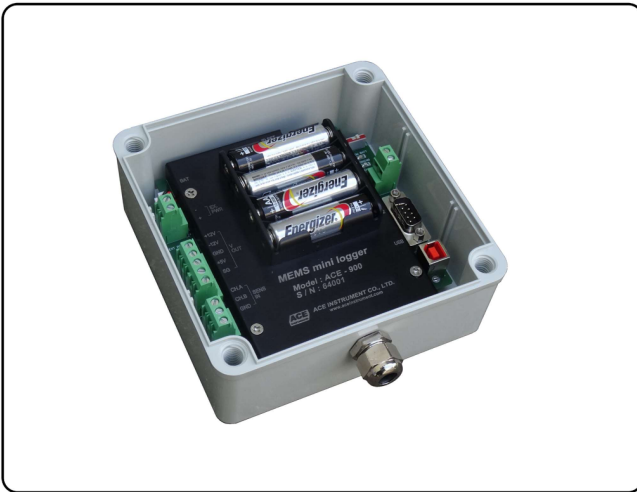


MEMS mini logger



Description

Model **ACE-900 MEMS mini logger** is developed specifically for MEMS (Micro electro mechanical system) tilt sensors and is designed as 2-channel to simultaneous measurement of 2-axis sensors. It is a mini data logger that can measure MEMS inclinometer, voltage (mV) sensor and current (mA) sensor, also can do for long-term unattended automation.

MEMS mini logger is powered by a 12V, -12V and constant voltage 5V output terminal. It can be measured a wide voltage range from -12V ~ 12V and current sensors from 4 ~ 20mA to collect data from most existing electrical sensors.

By installing and automatic operating the mV output sensor such as MEMS inclinometer, ELS sensor, semiconductor sensor and 4 ~ 20mA output type sensor at a specific point, it can solve the inconvenience of daily data acquisition.

In case of the communication method with the PC, it can be freely selected as RS-232, USB and RS-485 according to the user's convenience and usage. The data can be downloaded the fastest when using USB communication.

The power supply is basically equipped with 4EA of 6V AA class alkaline batteries. It is designed with low power and can be used without battery replacement for 6 months if measured in 1 hour unit. It is also possible to use continuously by applying direct power to external power input port.

Features

- User-friendly software
- Low-cost automatic measurement can be performed in a small field
- Multi-system construction using RS-485 communication
- Optimal for safety diagnosis and operation of a small number of measuring instruments
- Battery is available for 6 months without change
- 1 second minimum measurement storage unit
- Measurement of voltage(mV), current(mV)
- Working in all weather conditions from the wide range of working temperature
- Automatic calculation to engineering unit by PC software of automatic calculation function

Specification

Model	ACE-900	
Applied sensor	① MEMS sensor ② ELS sensor ③ Potentiometer ④ 4~20mA sensor	
Measurement range	① -12 V ~ 12 V ② 4~20 mA	
Resolution	0.1mV / 0.001mA	
Accuracy	0.1 %FSR	
Operating temperature	-40~60°C	
Output voltage	12V, -12V, constant voltage 5V	
Channel	2 Ch	
Communication port	RS-232, RS-485, USB(B type)	
Data capacity	30,000 data points	
Selection units	Selection of voltage (mV) or current (mA)	
Data memory	Memory	16MB Flash
	Time accuracy	0.001% (1min/month)
	Time format	Year, Month, Day, Hour, Minute, Second
	Data array	Data sorting by logger ID
Power	6 VDC alkaline battery (possible to measure for 6 months) Option : external power 9VDC	
Dimensions	140 X 140 X 75mm	
Weight	0.5kg	
Case	ABS case	
Accessories	RS-232 Cable, 1.5V alkaline battery 4EA	



[MEMS inclinometer connection]



[ELS inclinometer connection]



[Potentiometer connection]



[Semiconductor type piezometer connection]